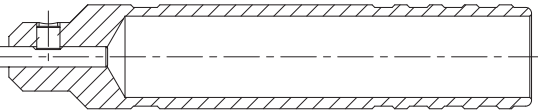


HUDY®

ULTIMATE PROFESSIONAL R/C TOOLS

Thank you for choosing this professional tool from the extensive line-up of HUDY Ultimate Professional Tools, world-renowned as the highest quality R/C tools used by all R/C factory teams and all champions. Our engineers have designed a perfect-fit, ultra-lightweight wrench that fits your hands, and specially coated anti-slip handles.

The tip of this tool is CAD-designed to very precisely fit the corresponding fastener. This Hudy Professional Wrench is made of a specially-developed hardened spring steel material, designed to keep its shape for a long time and to allow working torsion of the tip.



Before you start using the tool, please assemble it by inserting the shank of the tool into the handle, then tightening the set screw using a 1.5mm hex wrench.

Some wrenches (such as Allen wrenches and ballend hex wrenches) indicate the tip size by grooves in the handles, allowing you to identify the size of the wrench in a glance.

US measurement (inch-size) tools:

The number of thin grooves in the handle indicates the size of the tool tip.

Fewer grooves = smaller tips

More grooves = larger tips



5/64" 3/32" 1/16" .050" .035"

Metric (mm-size) tools:

The number and type of grooves in the handle indicate the size of the tool tip.

Thick grooves = 1mm

Thin groove = 0.5mm



4mm 3mm 2.5mm 2mm 1.5mm

ALWAYS

- ✓ Always use the tool for tightening and loosening fasteners only
- ✓ Always use the proper tool for the type and size of fastener for which it is designed and prescribed
- ✓ Always ensure the tip of the tool is firmly entrenched in the fastener cavity before applying torque

NEVER

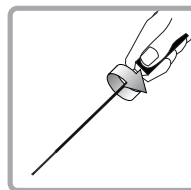
- ✗ Never use this tool to pry items
- ✗ Never over-apply tightening torque
- ✗ Never use the tool for another type or size of fastener for which it is not designed or prescribed
- ✗ Never let the tool fall on the floor, as it might break
- ✗ Never use this tool to work on electrical items; severe injury or electrocution may result



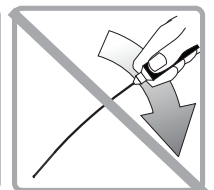
ALWAYS use the tool for tightening and loosening fasteners only. **NEVER** use this tool as a pry arm or over-apply tightening torque to the tool as this will void the guarantee.

If you use this tool for its intended use only, Hudy company guarantees a long life to this tool and the shape of the head. The Hudy company's guarantee does not apply if you use this tool for any other purpose than stated above.

Hudy does not take responsibility for any injury, damage, or misuse of this product.



✓ CORRECT



✗ INCORRECT

ALLEN WRENCHES: METRIC MEASUREMENTS

11 1520 ALLEN WRENCH + REPL TIP 1.5 x 60 MM

11 1540 ALLEN WRENCH + REPL TIP 1.5 x 120 MM

11 2020 ALLEN WRENCH + REPL TIP 2.0 x 60 MM

11 2040 ALLEN WRENCH + REPL TIP 2.0 x 120 MM

11 2520 ALLEN WRENCH + REPL TIP 2.5 x 60 MM

11 2540 ALLEN WRENCH + REPL TIP 2.5 x 120 MM

11 3020 ALLEN WRENCH + REPL TIP 3.0 x 60 MM

11 3040 ALLEN WRENCH + REPL TIP 3.0 x 120 MM

11 4040 ALLEN WRENCH + REPL TIP 4.0 x 120 MM

11 5040 ALLEN WRENCH + REPL TIP 5.0 x 120 MM

ALLEN WRENCHES: US MEASUREMENTS

12 3520 ALLEN WRENCH + REPL TIP .035 x 60 MM

12 3540 ALLEN WRENCH + REPL TIP .035 x 120 MM

12 5020 ALLEN WRENCH + REPL TIP .050 x 60 MM

12 5040 ALLEN WRENCH + REPL TIP .050 x 120 MM

12 6320 ALLEN WRENCH + REPL TIP .063 x 60 MM (1/16")

12 6340 ALLEN WRENCH + REPL TIP .063 x 120 MM (1/16")

12 7820 ALLEN WRENCH + REPL TIP .078 x 60 MM (5/64")

12 7840 ALLEN WRENCH + REPL TIP .078 x 120 MM (5/64")

12 9320 ALLEN WRENCH + REPL TIP .093 x 60 MM (3/32")

12 9340 ALLEN WRENCH + REPL TIP .093 x 120 MM (3/32")

BALLDRIVERS HEX WRENCHES: METRIC & US MEASUREMENTS

13 2040 ALLEN WRENCH + BALL REPL TIP 2.0 x 120 MM

13 2540 ALLEN WRENCH + BALL REPL TIP 2.5 x 120 MM

13 3040 ALLEN WRENCH + BALL REPL TIP 3.0 x 120 MM

13 4040 ALLEN WRENCH + BALL REPL TIP 4.0 x 120 MM

13 5040 ALLEN WRENCH + BALL REPL TIP 5.0 x 120 MM

13 7840 ALLEN WRENCH + BALL REPL TIP # .078 x 120 MM

13 9340 ALLEN WRENCH + BALL REPL TIP # .093 x 120 MM

SLOTTED SCREWDRIVERS

15 3040 SLOTTED SCREWDRIVER 3.0 x 120 MM

15 3050 SLOTTED SCREWDRIVER 3.0 x 150 MM - SPC

15 4050 SLOTTED SCREWDRIVER 4.0 MM - FOR ENGINE ADJUST. - SPC

15 4060 LONG SLOTTED SCREWDRIVER 4.0 MM - FOR ENGINE ADJUST. - SPC

15 5040 SLOTTED SCREWDRIVER 5.0 x 120 MM

15 5050 SLOTTED SCREWDRIVER 5.0 x 150 MM - SPC

15 5830 SLOTTED SCREWDRIVER FOR NOVAROSSO ENGINE HEAD

15 5800 SLOTTED SCREWDRIVER - FOR ENGINE HEAD - SPC

PHILLIPS SCREWDRIVERS

16 3540 PHILLIPS SCREWDRIVER 3.5 x 120 MM / 18MM (HARD)

16 4040 PHILLIPS SCREWDRIVER 4.0 x 120 MM / 18MM (SCREW 2.9 AND M3)

16 5000 PHILLIPS SCREWDRIVER 5.0 x 120 MM / 22MM (SCREW 3.5 AND M4)

16 5040 PHILLIPS SCREWDRIVER 5.0 x 120 MM / 18MM (SCREW 3.5 AND M4)

16 5840 PHILLIPS SCREWDRIVER 5.8 x 120 MM / 22 (SCREW 4.2 AND M5)

SOCKET DRIVERS: METRIC & US MEASUREMENTS

17 0045 SOCKET DRIVER 4.5 MM

17 0055 SOCKET DRIVER 5.5 MM

17 0070 SOCKET DRIVER 7.0 MM

17 0080 SOCKET DRIVER 8.0 MM

17 0104 SOCKET DRIVER 1/4" (6.35 MM)

17 0308 SOCKET DRIVER 3/8" (9.525 MM)

17 0316 SOCKET DRIVER 3/16" (4.763 MM)

17 0516 SOCKET DRIVER 5/16" (7.938 MM)

17 1132 SOCKET DRIVER 11/32" (8.731 MM)

WRENCHES FOR SLOT CARS

12 5090 ALLEN WRENCH #.050 AND GUIDE NUT TOOL 9.0 MM

12 5095 ALLEN WRENCH #.050 AND GUIDE NUT TOOL 3/8"

REPLACEMENT TIPS FOR ALLEN WRENCHES: METRIC MEASUREMENTS

11 1521 REPLACEMENT TIP # 1.5 x 60 MM

11 1541 REPLACEMENT TIP # 1.5 x 120 MM

11 2021 REPLACEMENT TIP # 2.0 x 60 MM

11 2041 REPLACEMENT TIP # 2.0 x 120 MM

11 2521 REPLACEMENT TIP # 2.5 x 60 MM

11 2541 REPLACEMENT TIP # 2.5 x 120 MM

11 3021 REPLACEMENT TIP # 3.0 x 60 MM

11 3041 REPLACEMENT TIP # 3.0 x 120 MM

11 4041 REPLACEMENT TIP # 4.0 x 120 MM

11 5041 REPLACEMENT TIP # 5.0 x 120 MM

REPLACEMENT TIPS FOR ALLEN WRENCHES: US MEASUREMENTS

12 3521 REPLACEMENT TIP # .035 x 60 MM

12 3541 REPLACEMENT TIP # .035 x 120 MM

12 5021 REPLACEMENT TIP # .050 x 60 MM

12 5041 REPLACEMENT TIP # .050 x 120 MM

12 6321 REPLACEMENT TIP # .063 x 60 MM (1/16")

12 6341 REPLACEMENT TIP # .063 x 120 MM (1/16")

12 7821 REPLACEMENT TIP # .078 x 60 MM (5/64")

12 7841 REPLACEMENT TIP # .078 x 120 MM (5/64")

12 9321 REPLACEMENT TIP # .093 x 60 MM (3/32")

12 9341 REPLACEMENT TIP # .093 x 120 MM (3/32")

REPLACEMENT BALLDRIVERS HEX TIPS: METRIC & US MEASUREMENTS

13 2041 REPLACEMENT TIP BALL # 2.0 x 120 MM

13 2541 REPLACEMENT TIP BALL # 2.5 x 120 MM

13 3041 REPLACEMENT TIP BALL # 3.0 x 120 MM

13 4041 REPLACEMENT TIP BALL # 4.0 x 120 MM

13 5041 REPLACEMENT TIP BALL # 5.0 x 120 MM

13 7841 REPLACEMENT TIP BALL # .078 x 120 MM (2)

13 9341 REPLACEMENT TIP BALL # .093 x 120 MM (2)

SLOTTED SCREWDRIVERS REPLACEMENT TIPS

15 3041 SLOTTED SCREWDRIVER REPLACEMENT TIP 3.0 x 120 MM - SPC

15 3051 SLOTTED SCREWDRIVER REPLACEMENT TIP 3.0 x 150 MM - SPC

15 4051 SLOTTED SCREWDRIVER REPLACEMENT TIP 4.0 x 150 MM - SPC

15 4061 SLOTTED SCREWDRIVER REPLACEMENT TIP LONG 4.0 x 180 MM - SPC

15 5051 SLOTTED SCREWDRIVER REPLACEMENT TIP 5.0 x 150 MM - SPC

15 5831 SLOTTED SCREWDRIVER REPLACEMENT TIP 5.8 x 100 MM - SPC

PHILLIPS SCREWDRIVERS REPLACEMENT TIPS

16 3541 PHILLIPS SCREWDRIVER REPLACEMENT TIP 3.5 x 120 MM (HARD)

16 4041 PHILLIPS SCREWDRIVER REPLACEMENT TIP 4.0 x 120 MM (HARD)

16 5041 PHILLIPS SCREWDRIVER REPLACEMENT TIP 5.0 x 120 MM (HARD)

16 5841 PHILLIPS SCREWDRIVER REPLACEMENT TIP 5.8 x 120 MM (HARD)

For more information about HUDY professional products, visit our website at:

www.hudy.net
hudy world racing network